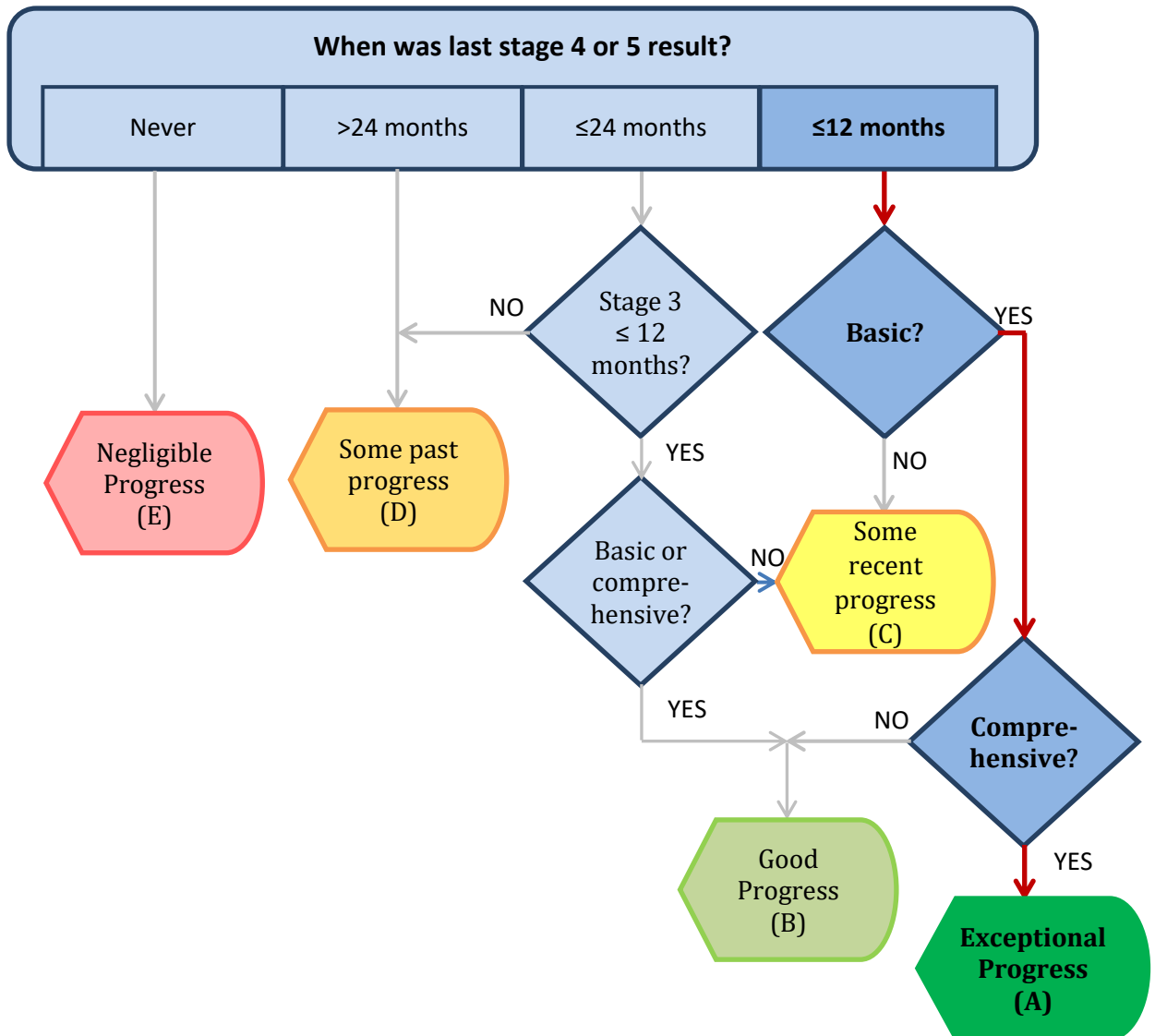


PANAMA MAHI AND YELLOWFIN TUNA FIP

RATING: "A - Exceptional Progress"

DATE: OCTOBER 2017



Stage 4 most relevant progress during the last 12 months:

In July 2017, the program for the extraction and conservation of otoliths of the mahi mahi coordinated by ARAP, IATTC and CeDePesca started in processing plants. FIP partner Panalang is participating from the program.

In September 2017, Executive Decree No. 126 of 2017 was issued in the Official Gazette No. 28365-B. The decree is a step forward in the management of the Panamanian mahi-mahi and yellowfin tuna, as it issues regulations regarding the use of longlines in waters under jurisdiction of the Republic of Panama. The rule mandates the following regarding the fishing gear and fishing capacity: The number of vessels or the total hold capacity of the fleet recorded and authorized for longline fishing shall not be increased; surface longlines shall have a maximum of one thousand (1,000) circular hooks without a turn; circular hooks must be at least N°14/0; longlines must be operated at depths greater than 9 meters. Regarding monitoring, the obligatory use of the fishing log has been stipulated and an official Onboard Observers Program for longline fishing must be implemented by ARAP; however, it should be noted that no timeframe or deadline is set for the implementation. Regarding non-target species, the rule mandates that vessels using longlines as fishing gear must keep on board and use the appropriate equipment to release marine turtles and other ETP species alive. Regarding fishing effort, a closure period is set for mahi-mahi from August 15th to October 15th each year.