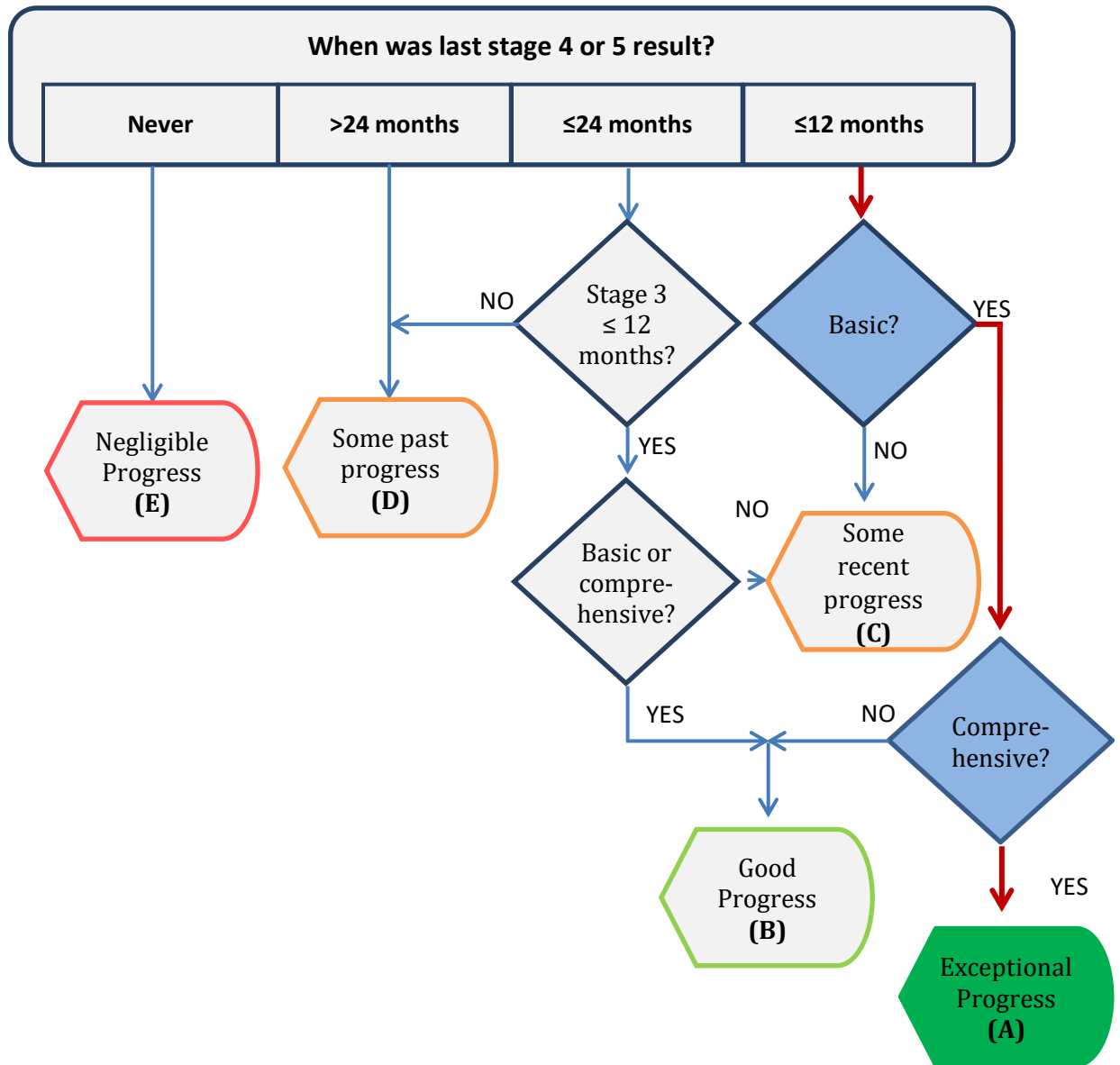


BRAZILIAN LOBSTER FIP

RATING: Exceptional Progress (A)

DATE: JANUARY 2020



Stage 4 most relevant progresses during the last 12 months:

During the CGPL meeting in May 2019, a periodo of 60 days has been established for SAP/MAPA to publish the normative instruction establishing the periodo of closure and defines the rules for the storage, landing, transport, marketing and processing of lobster species in the national territory.

In October 2019, the Ministry of Agriculture, Livestock and Supplies, published the Normative Instruction 54/2019, determining the harvesters and dealers to deliver only whole lobsters to processing plants with a tolerance of 5% for tails. Additionally, any form of commercialization and transport within the domestic market will be prohibited between February and April. The new rules for fishing and marketing will come into force on January 1, 2020.